

Executive Summary

The All Groups CPI was 113.14 in the month of January 2020, compared with 114.64 in the month of December 2019.

The monthly change, January 2020 compared to December 2019, was a decrease of -1.31 percent. This is compared to a monthly decrease of -1.27 percent in the previous month of December 2019. The most significant monthly price decreases were Food and Non-Alcoholic Beverages (-2.69 percent). This was mainly due to decreases in prices of some foodstuffs as a result of favorable weather conditions that led to increased food production and subsequently reduced food prices for various commodities.

Over the twelve months to the month of January 2020 (inflation rate), the All Groups CPI increased to 3.21 percent, compared with 3.13 percent over the twelve months to the month of December 2019.

Table 1: Inflation rate according to CPI; January 2020 (Dec 2014 = 100)

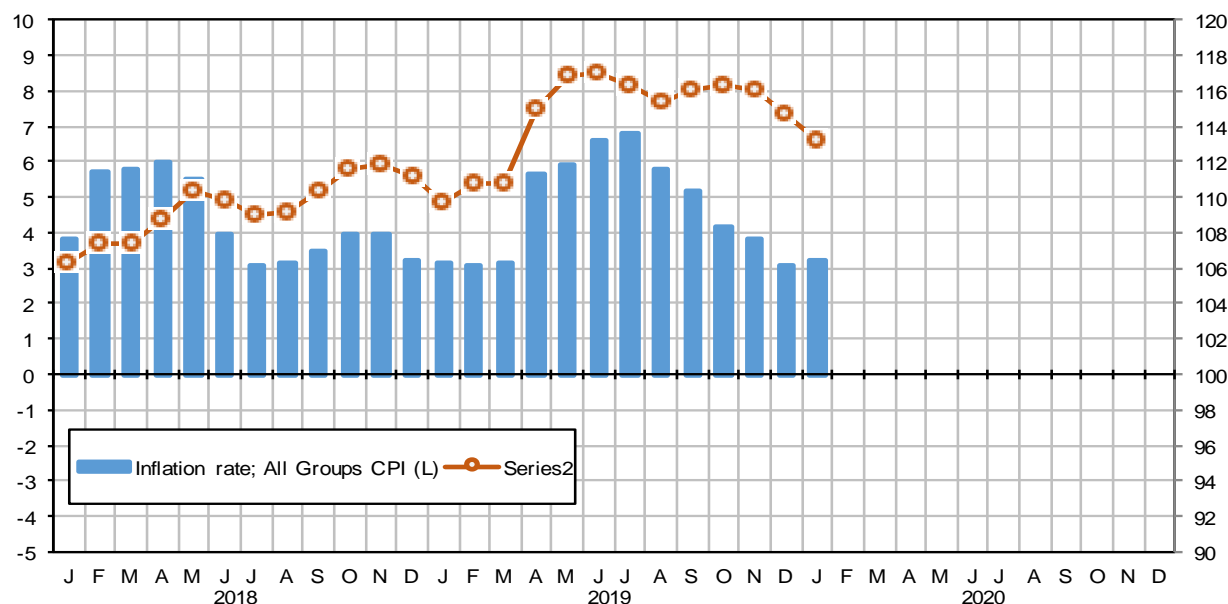
Consumer Price Index, January 2020	
Index (current month)	113.14
Index (previous month)	114.64
Index (previous year, same month)	109.62
Monthly % change	-1.31%
Annual % change (inflation rate)	3.21%

Inflation rate according to CPI

Percent change over twelve months

CPI Index

Index = 100 @ December 2014



Source: Directorate of National Statistics

Consumer Price Index (CPI) January 2020

General Inflation rate: All Groups CPI, January 2020

The rate of inflation for January 2020 is the percentage change in the Consumer Price Index (CPI) over the twelve-month period, from January 2019 to January 2020.

The **All Groups CPI** Increased 3.21 percent over the twelve months to January 2020 compared to 3.13 percent over the twelve months to December 2019.

The **All Groups CPI** monthly change for January 2020 was a decrease of -1.31 percent. This is compared to decrease of -1.27 percent recorded for December 2019.

General Inflation rate: Selected Groups, January 2020

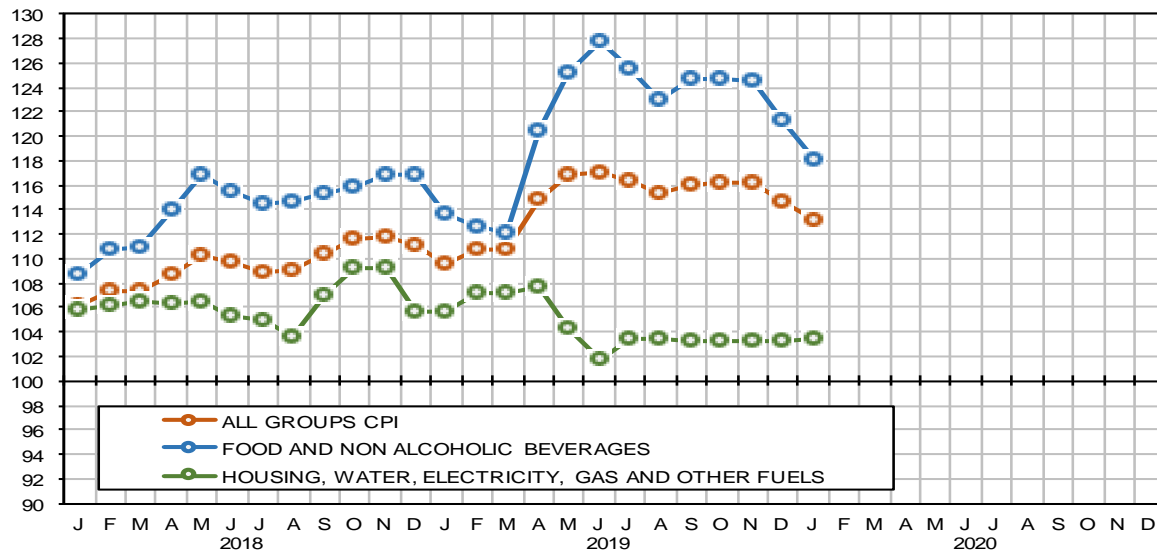
The rate of inflation for **Food and Non-Alcoholic Beverages** and **Housing, Water, Electricity, Gas** are the most significant items in the consumer basket in terms of expenditure and have the largest weighted influence on the **All Groups CPI**.

Food and Non-Alcoholic Beverages experienced a monthly decrease of -2.69 percent. This was due to a decrease in prices of some foodstuffs. As a result, the year on year inflation increased to 3.91 percent in January 2020. This is compared to the year on year inflation of 3.80 percent experienced in December 2019.

Housing, Water, Electricity and Gas experienced a monthly increase to 0.14 percent during the month of January 2020 compared to 0.00 percent experienced in December 2019. The year on year inflation decreased to -2.16 percent in January 2020. This is compared to the year on year inflation of -2.23 percent experienced in December 2019.

All Groups CPI and Selected Groups

Index = 100 @ December 2014

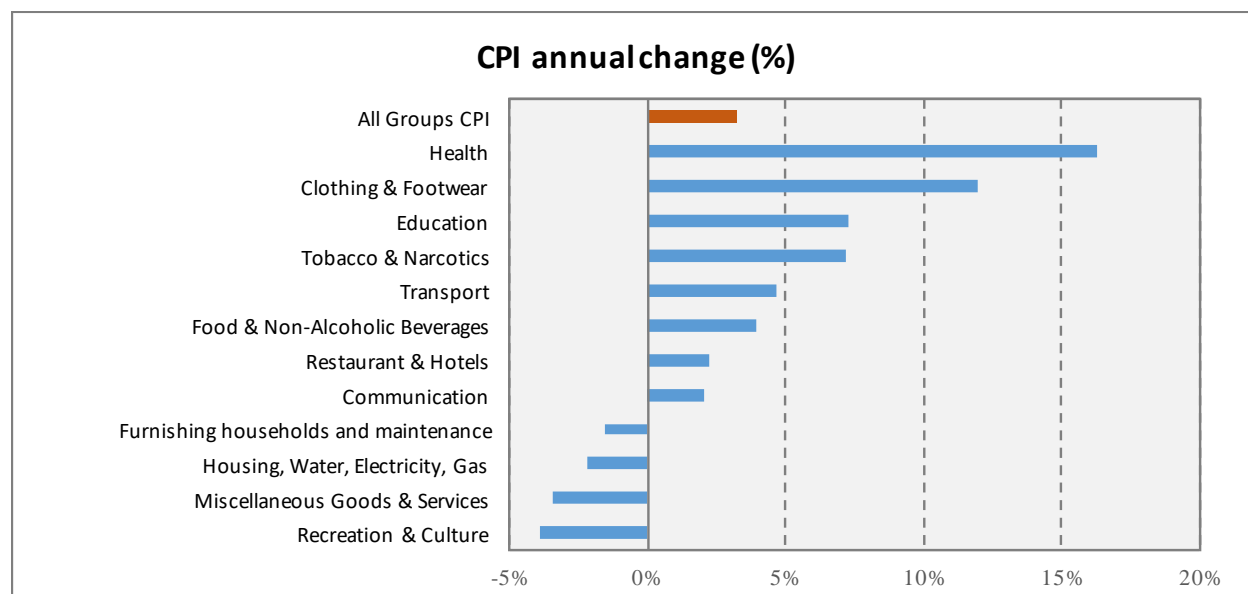


Source: Directorate of National Statistics

A bulletin on the January 2020 CPI and more detailed data in time series format have been posted on the DNS website: <http://www.dns.org.so>. Twitter @DNS_MoPIED

A. Major contributions of the different groups to the annual percentage change in the CPI

Chart 1: CPI indices, Annual inflation rate by all groups; January 2020 (Dec 2014 = 100)



Major contributions (positive):

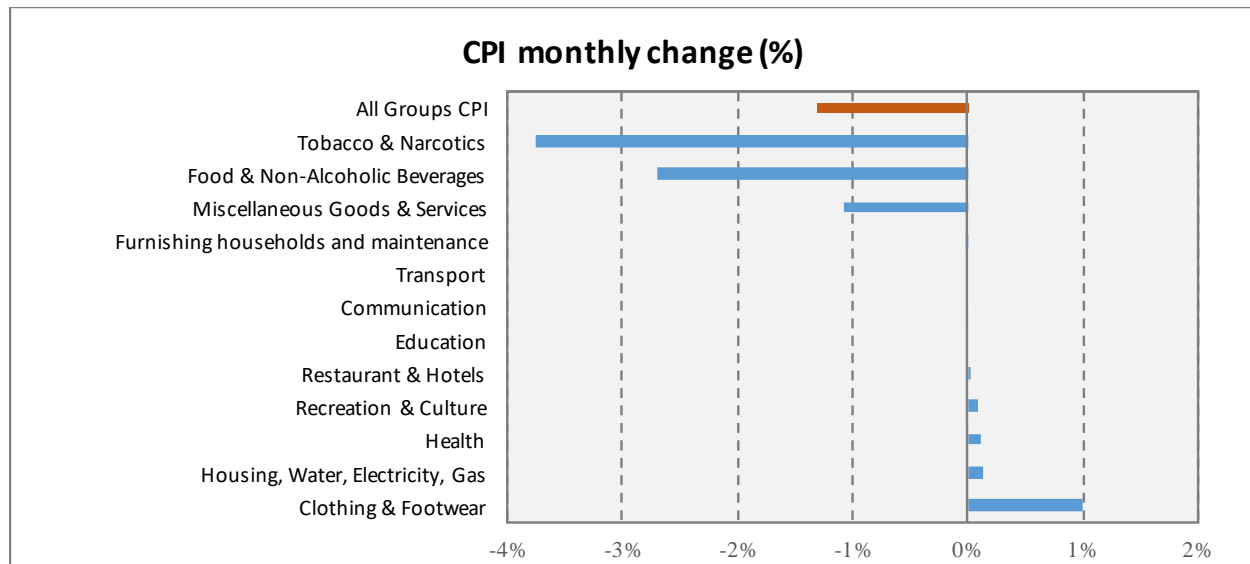
- **Food & Non-Alcoholic Beverages** increased 3.91 percent over the 12-months to January 2020. The increase was mainly the result of higher prices of Food (3.99%). Most of upwards contribution came from prices of Food products (50.43%) and Oils and fats (+15.46%).
- **Clothing and Footwear** recorded an increase of 11.98 percent compared to an annual increase of 10.84 percent in December 2019. Most of the upward contribution came from prices on Footwear (+10.87%) due to price increases on footwear for Women (24.42%).
- **Transport** showed an annual increase of 4.67 percent for the year January 2020 compared to 4.73 percent recorded for the year December 2019. Most of the upwards contribution came from Purchase of Vehicles (+11.40%).
- **Tobacco & Narcotics** increased to 7.15 percent for the year January 2020 compared with 14.28 percent recorded for the year December 2019 due to higher prices and fluctuations of chewing Khat/Miraa based products. The increase was impacted by normal volatility in prices for khat.
- **Restaurant & Hotels** increased by 2.23 percent in January 2020. The increase was mainly the result of prices of Restaurants, cafés and the like(S). Most of the upwards contribution came from prices of Food Restaurants (+28.57%).

Major contributions (negative):

- **Recreation & Culture** recorded an annual decrease of -3.91 percent in January 2020 compared to an annual decrease of -3.95 percent in December 2019. Most of the downwards contribution came from prices on Equipment for the reception, recording and reproduction of sound and pictures (-4.34%).

B. Major contributions of the different groups to the monthly percentage change in the CPI

Chart 2: CPI; Monthly inflation rate by all groups; January 2020 (Dec 2014 = 100)



Major contributions (positive):

- In general, no groups showed a significant Positive monthly change for the month of January 2020.

Major contributions (negative):

- **Food & Non-Alcoholic Beverages** registered a decrease of -2.69 percent during the month of January 2020 from -2.59 percent recorded in December 2019. Most of the downwards contribution came from prices food (-2.77%).
- **Tobacco & Narcotics** registered a decrease of -3.76 percent during the month of January 2020 from 0.00 percent recorded in December 2019. Most of the downwards contribution came from prices on chewing Miraa/Khat (-5.17%). The decrease was impacted by normal volatility in prices for khat.

Table 2: Changes in the Price Indices for January 2020 by main COICOP groups (Dec 2014=100)

COICOP Classification Group	CPI Weight	January 2019 Index	December 2019 Index	January 2020 Index	% change on previous month and current month	% change on same month of previous year (yr on yr)
All Groups CPI	100.00	109.62	114.64	113.14	-1.31	3.21
Food & Non-Alcoholic Beverages	46.04	113.62	121.33	118.06	-2.69	3.91
Tobacco & Narcotics	1.25	127.68	142.16	136.81	-3.76	7.15
Clothing & Footwear	5.03	108.85	120.68	121.89	1.00	11.98
Housing, Water, Electricity & Gas	23.41	105.69	103.26	103.40	0.14	-2.16
Furnishing, Households and Maintenance	2.93	104.3	102.73	102.72	-0.01	-1.52
Health	5.00	102.55	119.13	119.28	0.12	16.31
Transport	3.77	105.64	110.57	110.57	0.00	4.67
Communication	2.80	94.37	96.32	96.32	0.00	2.07
Recreation & Culture	1.00	102.55	98.45	98.54	0.09	-3.91
Education	4.00	100.45	107.75	107.75	0.00	7.27
Restaurant & Hotels	2.00	132.96	135.9	135.92	0.02	2.23
Miscellaneous Goods & Services	2.77	107.68	105.11	103.99	-1.07	-3.42

Note:

The Consumer Price Index is generated by conducting a survey of purchaser prices for a representative basket of household consumption (goods and services), during the first and third weeks of the collection month. The prices are obtained from selected retail outlets in four data collection zones spread across Mogadishu.

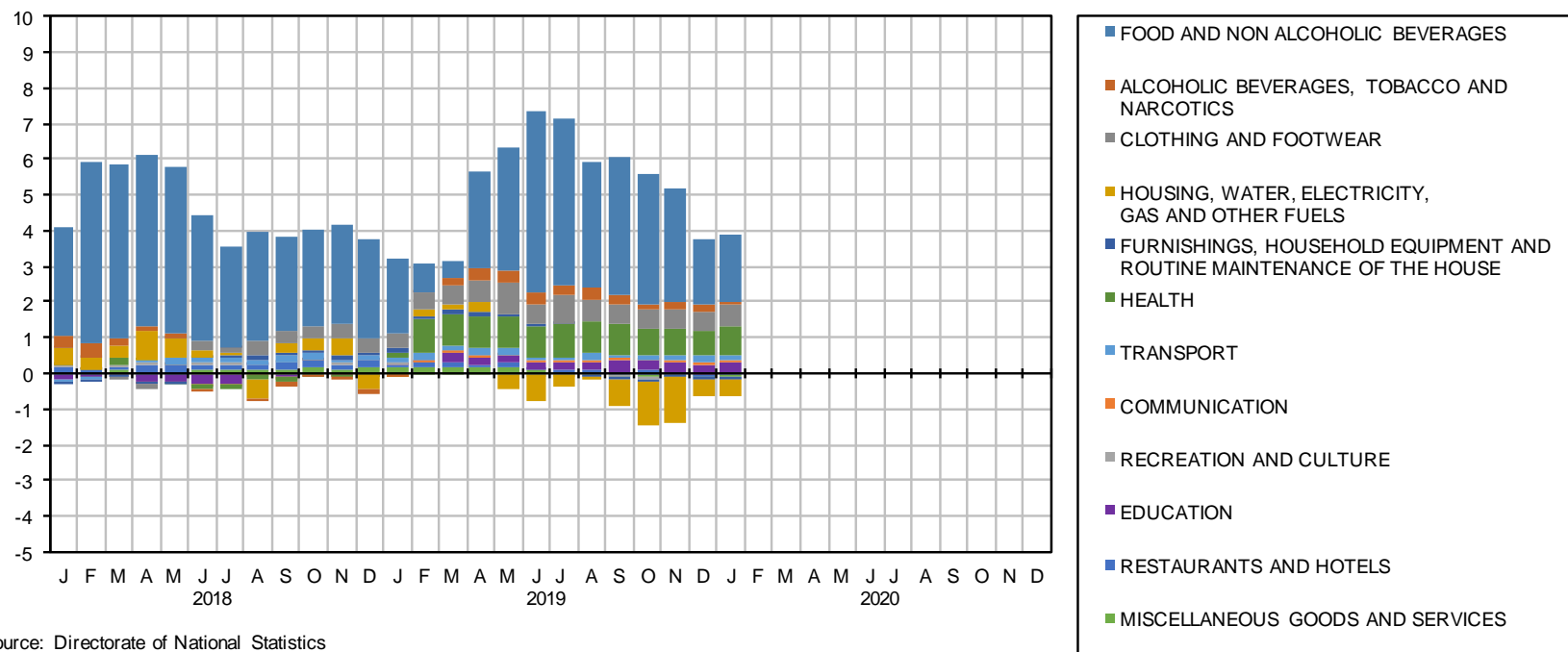
Next release

Consumer price index, February 2020, will be released on 15th March 2020. For more information on prices and other official statistics, please visit the DNS website at <http://www.dns.org.so>

Annex 1: All Groups CPI – Points Contribution to Inflation Rate by COICOP Division in January 2020.

All Groups CPI

Points contribution (%) to inflation rate (contribution by COICOP)



Source: Directorate of National Statistics

Annex 1 provides an analysis of the inflation rate for the month broken up into a cross section of COICOP Divisions displaying their respective impact (contribution) to the All Groups CPI.