

Executive Summary

The All Groups CPI was 114.13 in the month of February 2020, compared with 113.14 in the month of January 2020.

The monthly change, February 2020 compared to January 2020, was an increase of 0.88 percent. This is compared to a monthly decrease of -1.31 percent in the previous month of January 2020. There were no significant monthly price increases during the month of February.

Over the twelve months to the month of February 2020 (inflation rate), the All Groups CPI decreased to 3.06 percent, compared with 3.21 percent over the twelve months to the month of January 2020.

Table 1: Inflation rate according to CPI; February 2020 (Dec 2014 = 100)

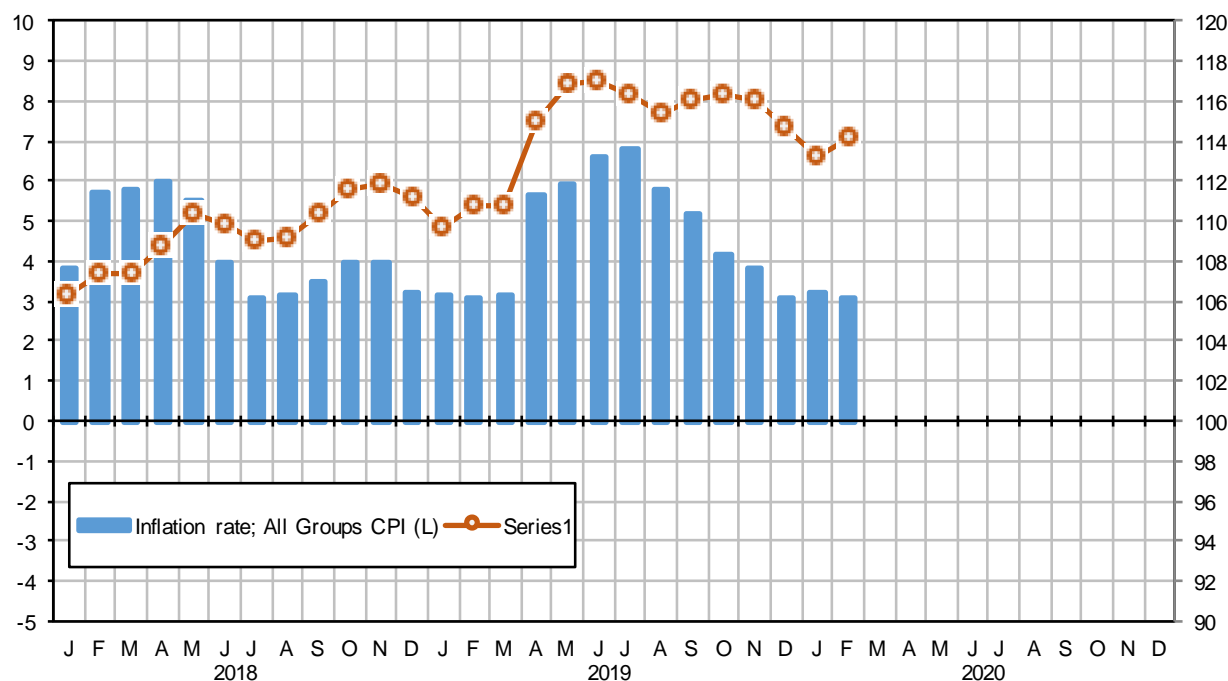
Consumer Price Index, February 2020	
Index (current month)	114.13
Index (previous month)	113.14
Index (previous year, same month)	110.75
Monthly % change	0.88%
Annual % change (inflation rate)	3.06%

Inflation rate according to CPI

Percent change over twelve months

CPI Index

Index = 100 @ December 2014



Source: Directorate of National Statistics

Consumer Price Index (CPI) February 2020

General Inflation rate: All Groups CPI, February 2020

The rate of inflation for February 2020 is the percentage change in the Consumer Price Index (CPI) over the twelve-month period, from February 2019 to February 2020.

The **All Groups CPI** decreased 3.06 percent over the twelve months to February 2020 compared to 3.21 percent over the twelve months to January 2020.

The **All Groups CPI** monthly change for February 2020 was an increase of 0.88 percent. This is compared to a decrease of -1.31 percent recorded for January 2020.

General Inflation rate: Selected Groups, February 2020

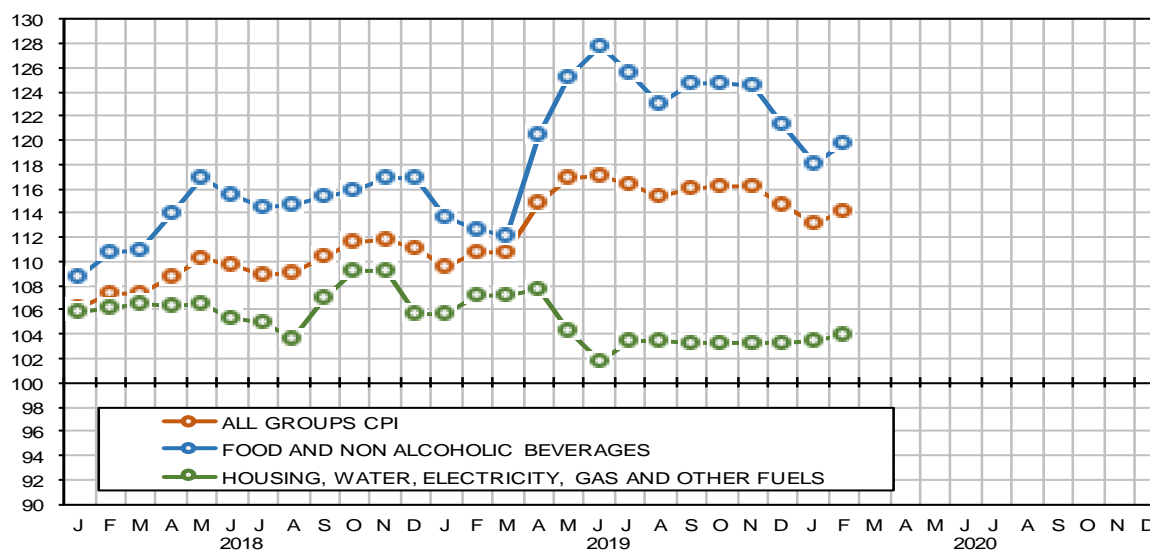
The rate of inflation for **Food and Non-Alcoholic Beverages** and **Housing, Water, Electricity, Gas** are the most significant items in the consumer basket in terms of expenditure and have the largest weighted influence on the **All Groups CPI**.

Food and Non-Alcoholic Beverages experienced a monthly increase of 1.50 percent. This was due to an increase in prices of some foodstuffs. As a result, the year on year inflation increased to 6.38 percent in February 2020. This is compared to the year on year inflation of 3.91 percent experienced in January 2020.

Housing, Water, Electricity and Gas experienced a monthly increase of 0.47 percent during the month of February 2020 compared to 0.14 percent experienced in January 2020. The year on year inflation decreased to -3.11 percent in February 2020. This is compared to the year on year inflation of -2.16 percent experienced in January 2020.

All Groups CPI and Selected Groups

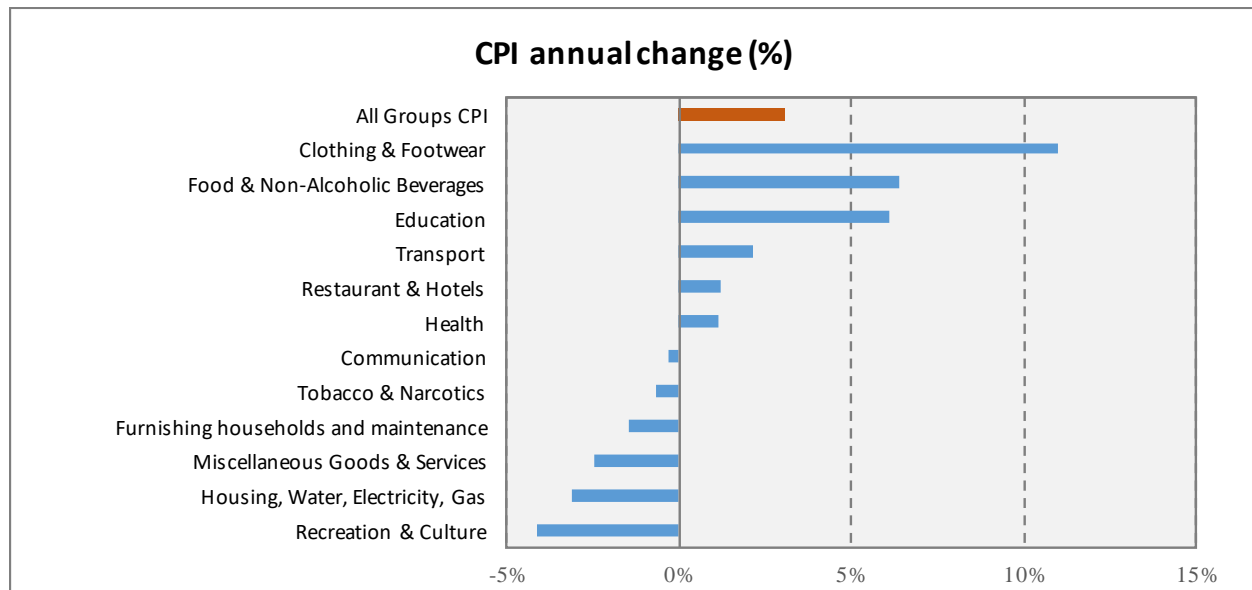
Index = 100 @ December 2014



Source: Directorate of National Statistics

A bulletin on the February 2020 CPI and more detailed data in time series format have been posted on the DNS website: <http://www.dns.org.so>. Twitter @DNS_MoPIED

A. Major contributions of the different groups to the annual percentage change in the CPI
Chart 1: CPI indices, Annual inflation rate by all groups; February 2020 (Dec 2014 = 100)



Major contributions (positive):

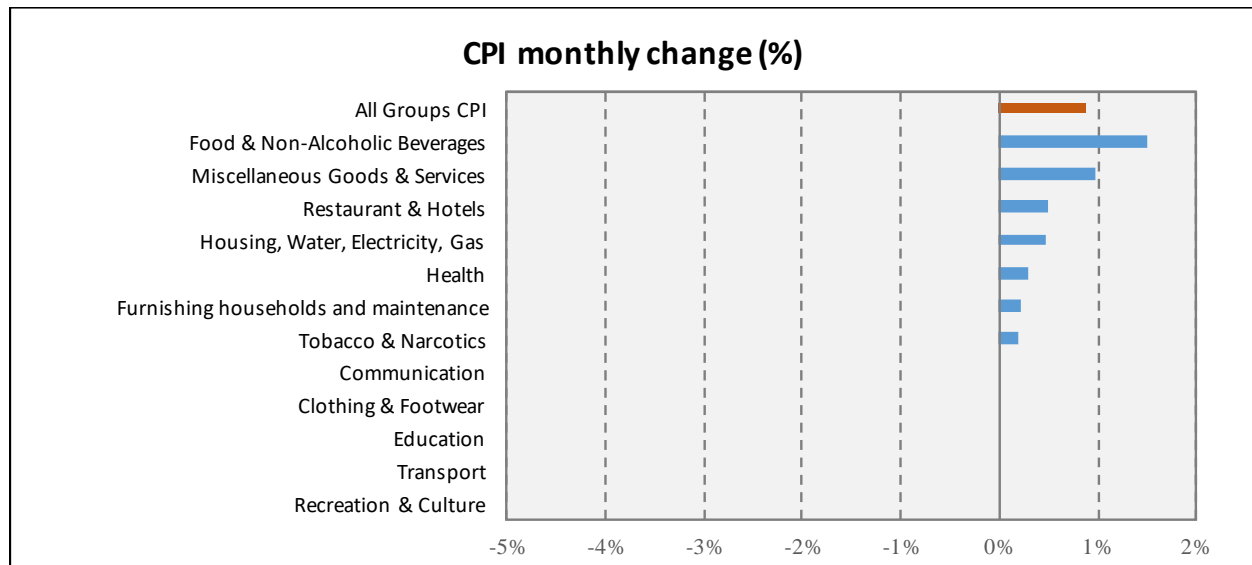
- **Food & Non-Alcoholic Beverages** increased 6.38 percent over the 12-months to February 2020. The increase was mainly the result of higher prices of Food (3.99%). Most of upwards contribution came from prices of Fruits (16.06%).
- **Clothing and Footwear** recorded an increase of 10.95 percent compared to an annual increase of 11.98 percent in January 2020. Most of the upward contribution came from prices on Garments (+11.80%) due to price increases on garments for children (20.27%).
- **Transport** showed an annual slight increase of 2.13 percent for the year February 2020 compared to 4.67 percent recorded for the year January 2020. Most of the upwards contribution came from Purchase of Vehicles (+5.22%).

Major contributions (negative):

- **Recreation & Culture** recorded an annual decrease of -4.14 percent in February 2020 compared to an annual decrease of -3.91 percent in January 2020. Most of the downwards contribution came from prices on Equipment for the reception, recording and reproduction of sound and pictures (-4.58%).
- **Housing, Water, Electricity & Gas** recorded an annual decrease of -3.11 percent in February 2020 compared to an annual decrease of -2.16 percent in January 2020. Most of the downwards contribution came from prices on water supply and Miscellaneous services. (-5.88%).
- **Miscellaneous Goods & Services** registered a decrease of -2.46 percent during the month of February 2020 from -3.42 percent recorded in January 2020. The decrease was mainly the Other appliance, articles and products for personal care (-5.83%).

B. Major contributions of the different groups to the monthly percentage change in the CPI

Chart 2: CPI; Monthly inflation rate by all groups; February 2020 (Dec 2014 = 100)



Major contributions (positive):

- **Food & Non-Alcoholic Beverages** registered a slight increase of 1.50 percent during the month of February 2020 from -2.69 percent recorded in January 2020. Most of the upwards contribution came from prices Fruits (+7.92%).

Major contributions (negative):

- In general, no groups showed a significant Negative monthly change for the month of February 2020.

Table 2: Changes in the Price Indices for February 2020 by main COICOP groups (Dec 2014=100)

COICOP Classification Group	CPI Weight	February 2019 Index	January 2020 Index	February 2020 Index	% change on previous month and current month	% change on same month of previous year (yr on yr)
All Groups CPI	100.00	110.75	113.14	114.13	0.88	3.06
Food & Non-Alcoholic Beverages	46.04	112.65	118.06	119.83	1.50	6.38
Tobacco & Narcotics	1.25	138.02	136.81	137.08	0.20	-0.68
Clothing & Footwear	5.03	109.85	121.89	121.89	0.00	10.95
Housing, Water, Electricity & Gas	23.41	107.22	103.40	103.88	0.47	-3.11
Furnishing, Households and Maintenance	2.93	104.50	102.72	102.95	0.22	-1.48
Health	5.00	118.27	119.28	119.62	0.29	1.14
Transport	3.77	108.26	110.57	110.57	0.00	2.13
Communication	2.80	96.66	96.32	96.32	0.00	-0.35
Recreation & Culture	1.00	102.79	98.54	98.54	0.00	-4.14
Education	4.00	101.54	107.75	107.75	0.00	6.11
Restaurant & Hotels	2.00	134.97	135.92	136.61	0.50	1.21
Miscellaneous Goods & Services	2.77	107.65	103.99	105.00	0.97	-2.46

Note:

The Consumer Price Index is generated by conducting a survey of purchaser prices for a representative basket of household consumption (goods and services), during the first and third weeks of the collection month. The prices are obtained from selected retail outlets in four data collection zones spread across Mogadishu.

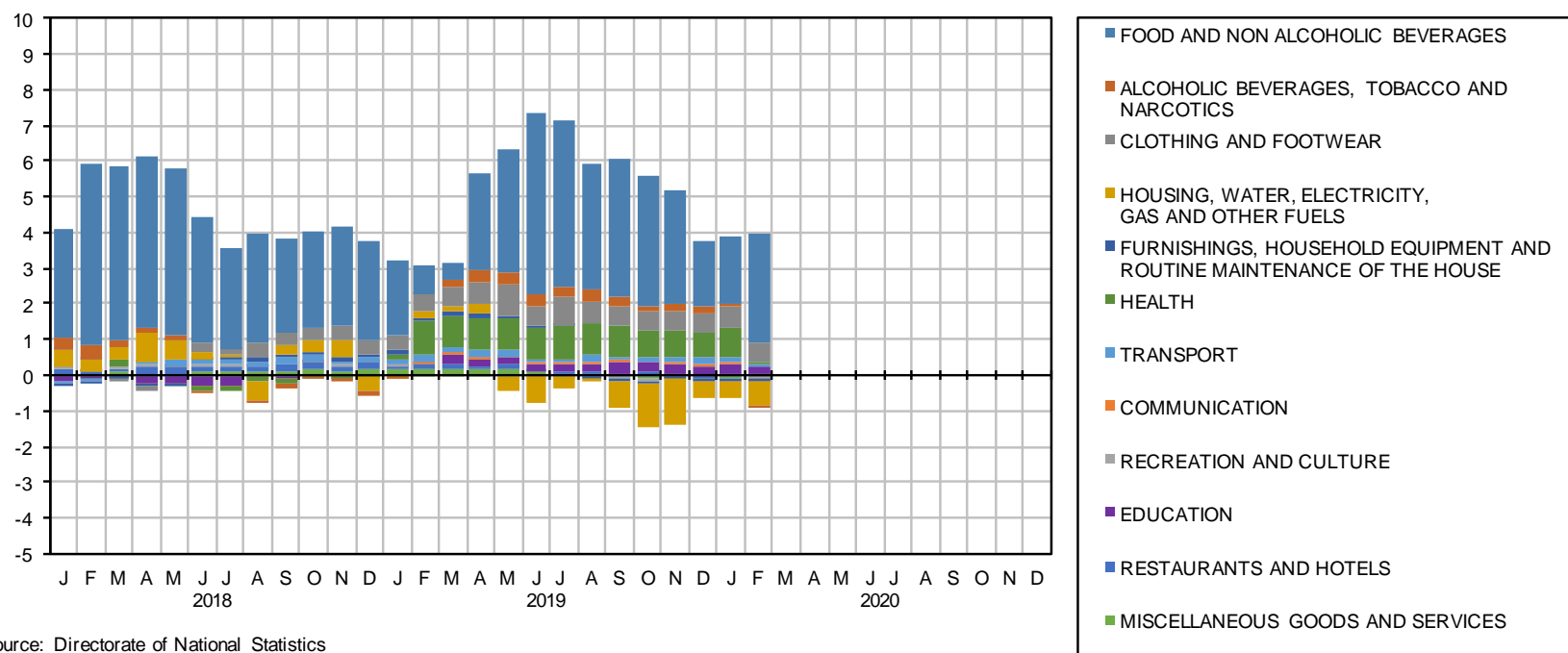
Next release

Consumer price index, March 2020, will be released on 15th April 2020. For more information on prices and other official statistics, please visit the DNS website at <http://www.dns.org.so>

Annex 1: All Groups CPI – Points Contribution to Inflation Rate by COICOP Division in February 2020.

All Groups CPI

Points contribution (%) to inflation rate (contribution by COICOP)



Source: Directorate of National Statistics

Annex 1 provides an analysis of the inflation rate for the month broken up into a cross section of COICOP Divisions displaying their respective impact (contribution) to the All Groups CPI.