



## Executive Summary

The All Groups CPI was 122.04 in the month of June 2020, compared with 121.76 in the month of May 2020.

The monthly change, June 2020 compared to May 2020, was a decrease of 0.23 percent. This is compared to a monthly increase of 1.63 percent in the previous month of May 2020. The most significant monthly price increases were **Housing, Water, Electricity & Gas** (+4.28%) and Furnishing, Households and Maintenance (+4.76%). The increase for Housing, Water, Electricity & Gas was mainly due to increases in prices of Charcoal (+20.59%), (Chart 2).

Over the twelve months to the month of June 2020 (inflation rate), the All Groups CPI increased to 4.30 percent, compared with 4.24 percent over the twelve months to the month of May 2020.

**Table 1: Inflation rate according to CPI; June 2020 (Dec 2014 = 100)**

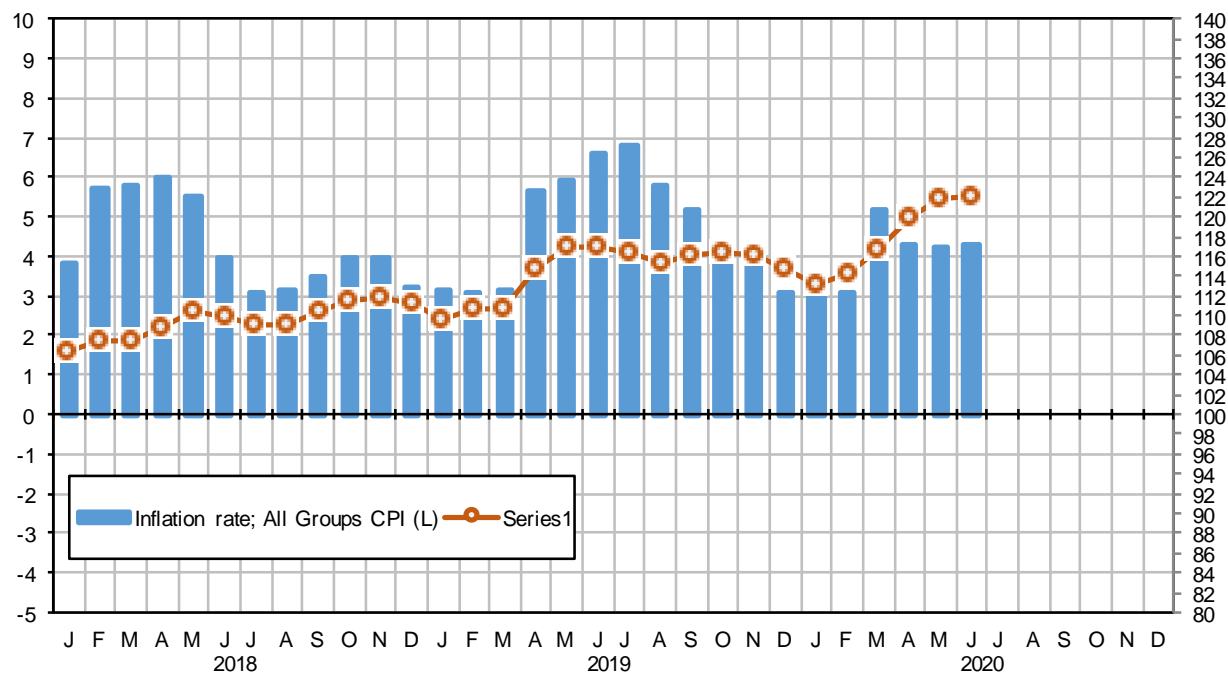
Consumer Price Index, June 2020	
Index (current month)	122.04
Index (previous month)	121.76
Index (previous year, same month)	117.01
Monthly % change	0.23%
Annual % change (inflation rate)	4.30%

## Inflation rate according to CPI

## CPI Index

Percent change over twelve months

Index = 100 @ December 2014



Source: Directorate of National Statistics

A bulletin on the June 2020 CPI and more detailed data in time series format have been posted on the DNS website: <http://www.dns.org.so>. Twitter @DNS\_MoPIED

## Consumer Price Index (CPI) June 2020

### General Inflation rate: All Groups CPI, June 2020

The rate of inflation for June 2020 is the percentage change in the Consumer Price Index (CPI) over the twelve-month period, from June 2019 to June 2020.

The **All Groups CPI** increased 4.30 percent over the twelve months to June 2020 compared to 4.24 percent over the twelve months to May 2020.

The **All Groups CPI** monthly change for June 2020 was a decrease of 0.23 percent. This is compared to an increase of 1.63 percent recorded for May 2020.

### General Inflation rate: Selected Groups, June 2020

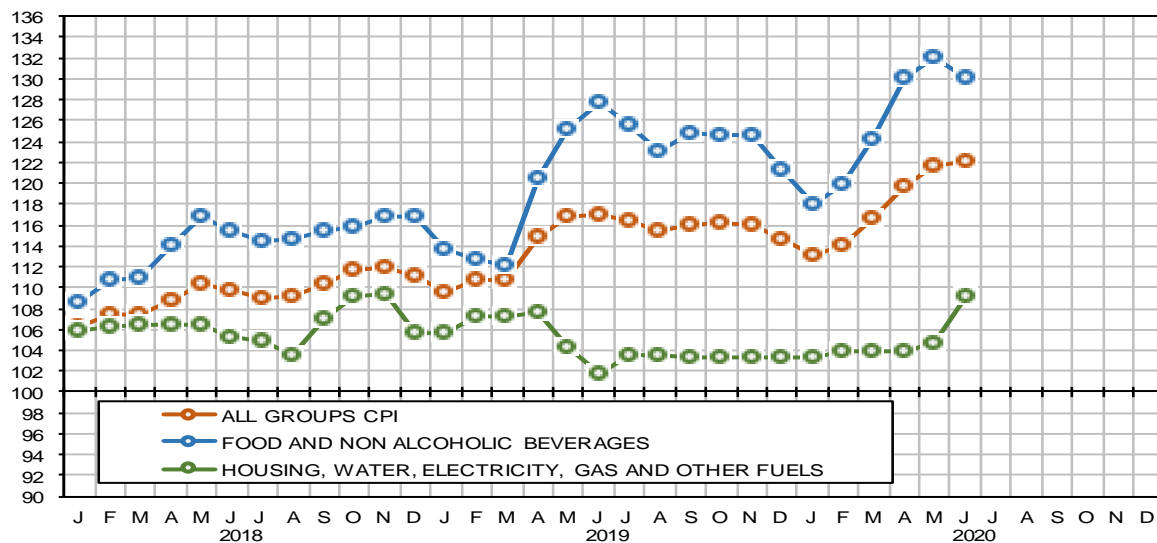
The rate of inflation for **Food and Non-Alcoholic Beverages** and **Housing, Water, Electricity, Gas** are the most significant items in the consumer basket in terms of expenditure and have the largest weighted influence on the **All Groups CPI**.

**Food and Non-Alcoholic Beverages** experienced a monthly decrease of -1.52 percent. This was due to falls in the cost of some food items, which was mainly attributed to a relief from a situation of depressed supply of goods and services as experienced in previous months. As a result, the year on year inflation decreased to 1.81 percent in June 2020. This is compared to the year on year inflation of 5.50 percent experienced in May 2020.

**Housing, Water, Electricity and Gas** experienced a monthly increase of 4.28 percent during the month of June 2020 compared to a monthly decrease of 0.84 percent experienced in May 2020. The year on year inflation increased to 7.35 percent in June 2020. This is compared to the year on year inflation of 0.43 percent experienced in May 2020.

### All Groups CPI and Selected Groups

Index = 100 @ December 2014

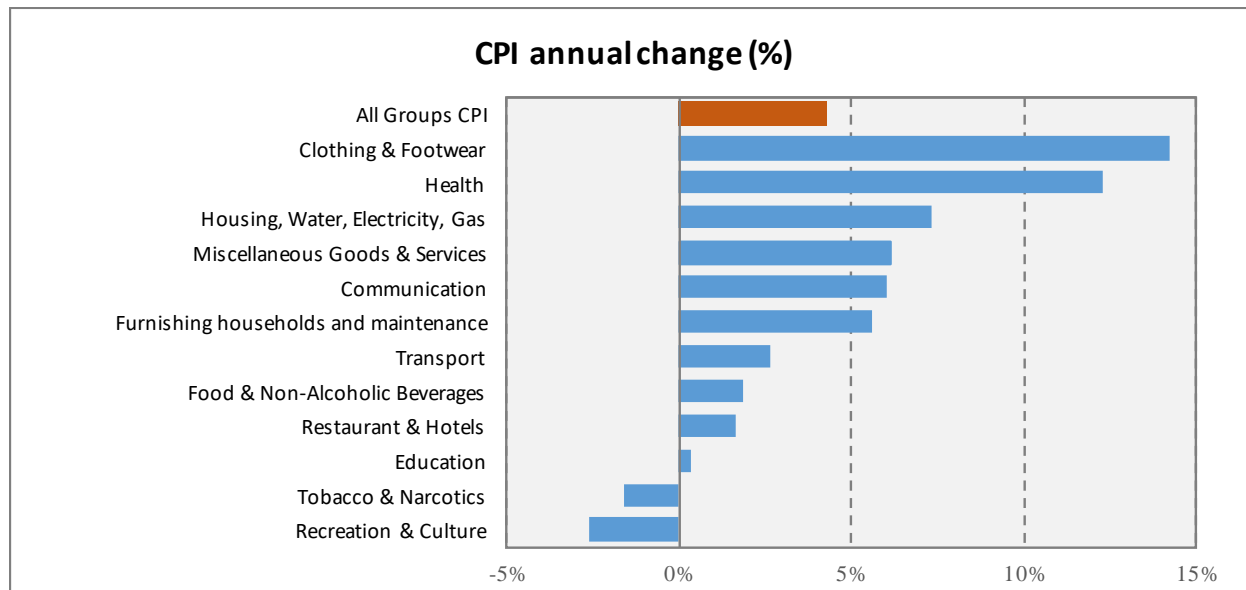


Source: Directorate of National Statistics

A bulletin on the June 2020 CPI and more detailed data in time series format have been posted on the DNS website: <http://www.dns.org.so>. Twitter @DNS\_MoPIED

## A. Major contributions of the different groups to the annual percentage change in the CPI

Chart 1: CPI indices, Annual inflation rate by all groups; June 2020 (Dec 2014 = 100)



### Major contributions (positive):

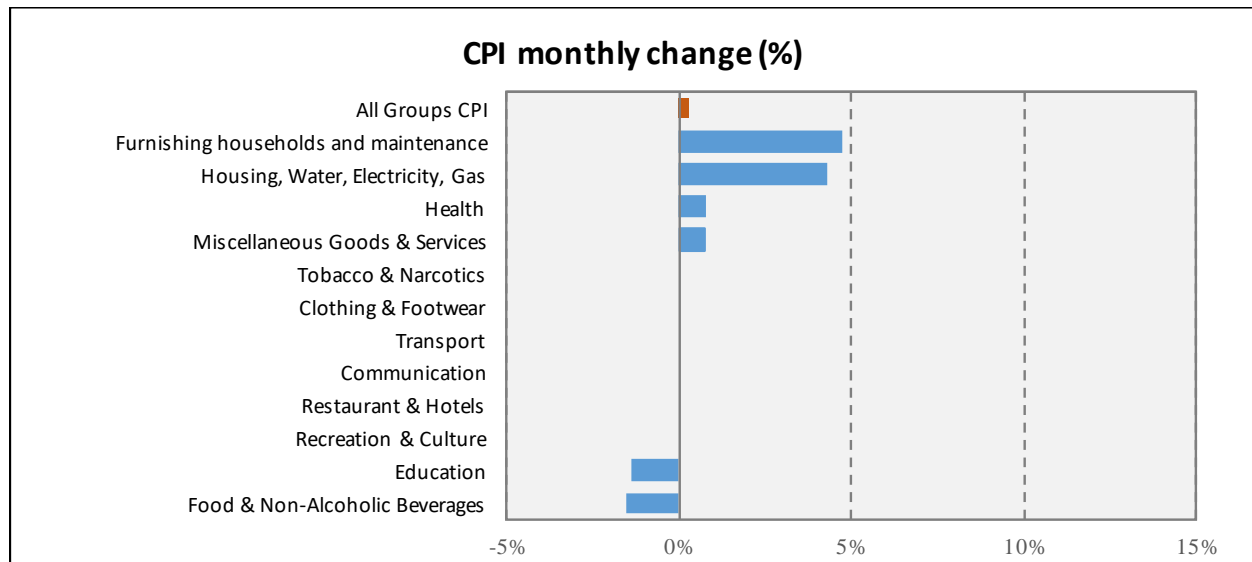
- **Clothing and Footwear** recorded an annual increase of 14.21 percent. Most of the upward contribution came from prices on Garments (+13.48%) due to price increases on garments for children (+25.60%) and Garments for women (+10.13).
- **Housing, Water, Electricity and Gas** recorded an annual increase of 7.35 percent in June 2020 compared to an annual decrease of 0.43 percent in May 2020. The increase was mainly the result of higher prices of Materials for the maintenance and repair of the dwelling (4.16%). Most of upwards contribution came from prices of Charcoal (+25.00%).
- **Health** showed an annual inflation rate of 12.31 percent in June compared to 11.47 percent registered in May. The increase was mainly the result of higher prices of Out-patient services (+17.16%). Most of the upwards contribution came from prices of Dental services (+247.22%).
- **Communication** showed an increase movement of 6.03 percent for the year June 2020 compared to 5.17 percent recorded for the year May 2020. Most of the upwards contribution came from Telephone and telefax equipment (+5.20%).
- **Furnishing, Households and Maintenance** showed an annual inflation rate of 5.58 percent in June 2020 compared to -1.43 percent registered in May. The increase was mainly attributed to Household appliances (+9.30%).

### Major contributions (negative):

- **Recreation & Culture** recorded an annual decrease of -2.58 percent in June 2020 compared to an annual decrease of -3.68 percent in May 2020. Most of the downwards contribution came from prices on Equipment for the reception, recording and reproduction of sound and pictures (-3.10%).

## B. Major contributions of the different groups to the monthly percentage change in the CPI

Chart 2: CPI; Monthly inflation rate by all groups; June 2020 (Dec 2014 = 100)



### Major contributions (positive):

- **Housing, Water, Electricity and Gas** registered an increase of 4.28 percent for the month of June 2020 from the 0.84 percent fall recorded during the month of May 2020. Most of the upwards contribution came from prices on Charcoal (+20.00).
- **Furnishing, Households and Maintenance** registered an increase of 4.76 percent during the month of June 2020 from a stable movement of 0.00 percent recorded in May 2020. Most of upwards contribution came from Household appliances (+8.32%).

### Major contributions (negative):

- In general, no groups showed a significant Negative monthly change for the month of June 2020.

**Table 2: Changes in the Price Indices for June 2020 by main COICOP groups (Dec 2014=100)**

<b>COICOP Classification Group</b>	<b>CPI Weight</b>	<b>June 2019 Index</b>	<b>May 2020 Index</b>	<b>June 2020 Index</b>	<b>% change on previous month and current month</b>	<b>% change on same month of previous year (yr on yr)</b>
<b>All Groups CPI</b>	100.00	117.01	121.76	122.04	0.23	4.30
Food & Non-Alcoholic Beverages	46.04	127.71	132.03	130.02	-1.52	1.81
Tobacco & Narcotics	1.25	139.27	137.08	137.08	0.00	-1.57
Clothing & Footwear	5.03	121.50	138.76	138.76	0.00	14.21
Housing, Water, Electricity & Gas	23.41	101.76	104.75	109.24	4.28	7.35
Furnishing, Households and Maintenance	2.93	102.90	103.70	108.64	4.76	5.58
Health	5.00	118.52	132.12	133.10	0.75	12.31
Transport	3.77	107.94	110.83	110.83	0.00	2.67
Communication	2.80	95.55	101.31	101.31	0.00	6.03
Recreation & Culture	1.00	101.15	98.54	98.54	0.00	-2.58
Education	4.00	105.93	107.75	106.27	-1.37	0.32
Restaurant & Hotels	2.00	134.42	136.61	136.61	0.00	1.62
Miscellaneous Goods & Services	2.77	105.23	110.86	111.67	0.74	6.12

**Note:**

The Consumer Price Index is generated by conducting a survey of purchaser prices for a representative basket of household consumption (goods and services), during the first and third weeks of the collection month. The prices are obtained from selected retail outlets in four data collection zones spread across Mogadishu.

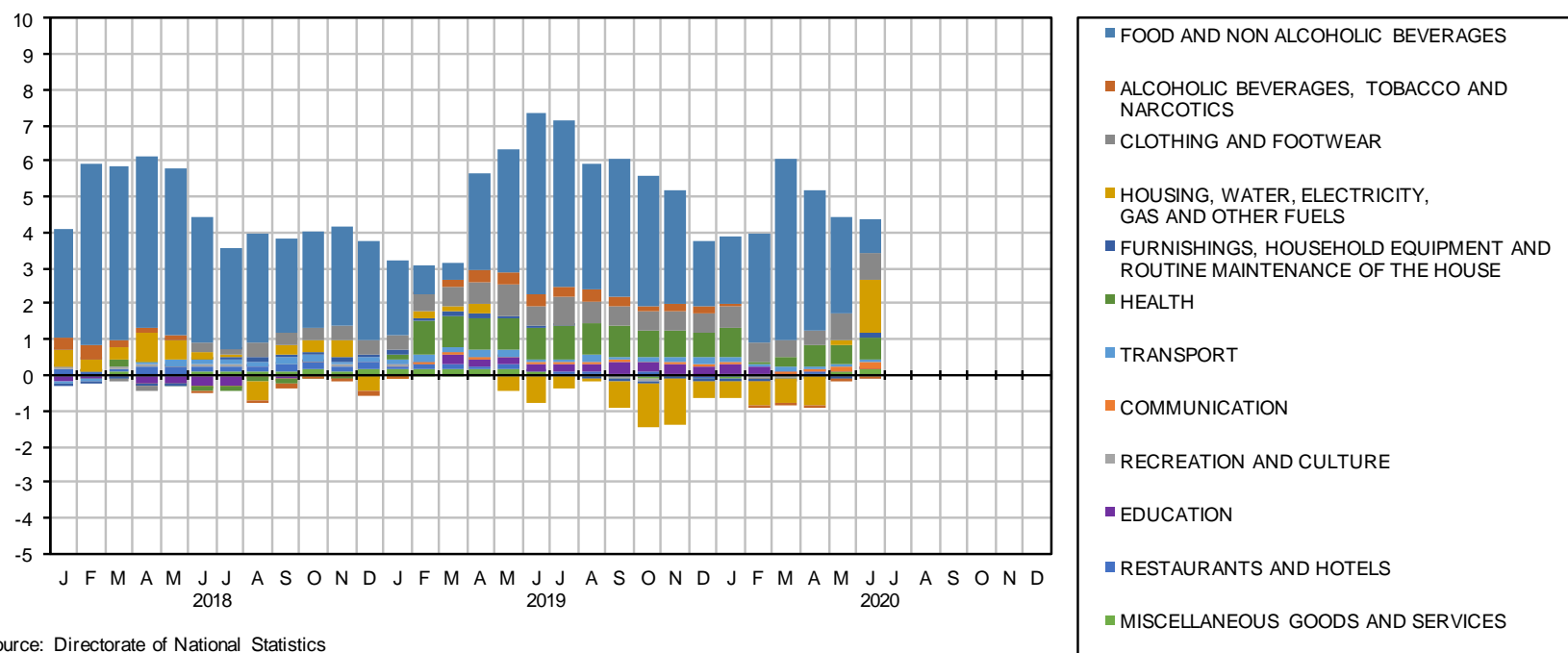
**Next release**

Consumer price index, July 2020, will be released on 15<sup>th</sup> August 2020. For more information on prices and other official statistics, please visit the DNS website at <http://www.dns.org.so>

## Annex 1: All Groups CPI – Points Contribution to Inflation Rate by COICOP Division in June 2020.

### All Groups CPI

Points contribution (%) to inflation rate (contribution by COICOP)



**Annex 1** provides an analysis of the inflation rate for the month broken up into a cross section of COICOP Divisions displaying their respective impact (contribution) to the All Groups CPI.